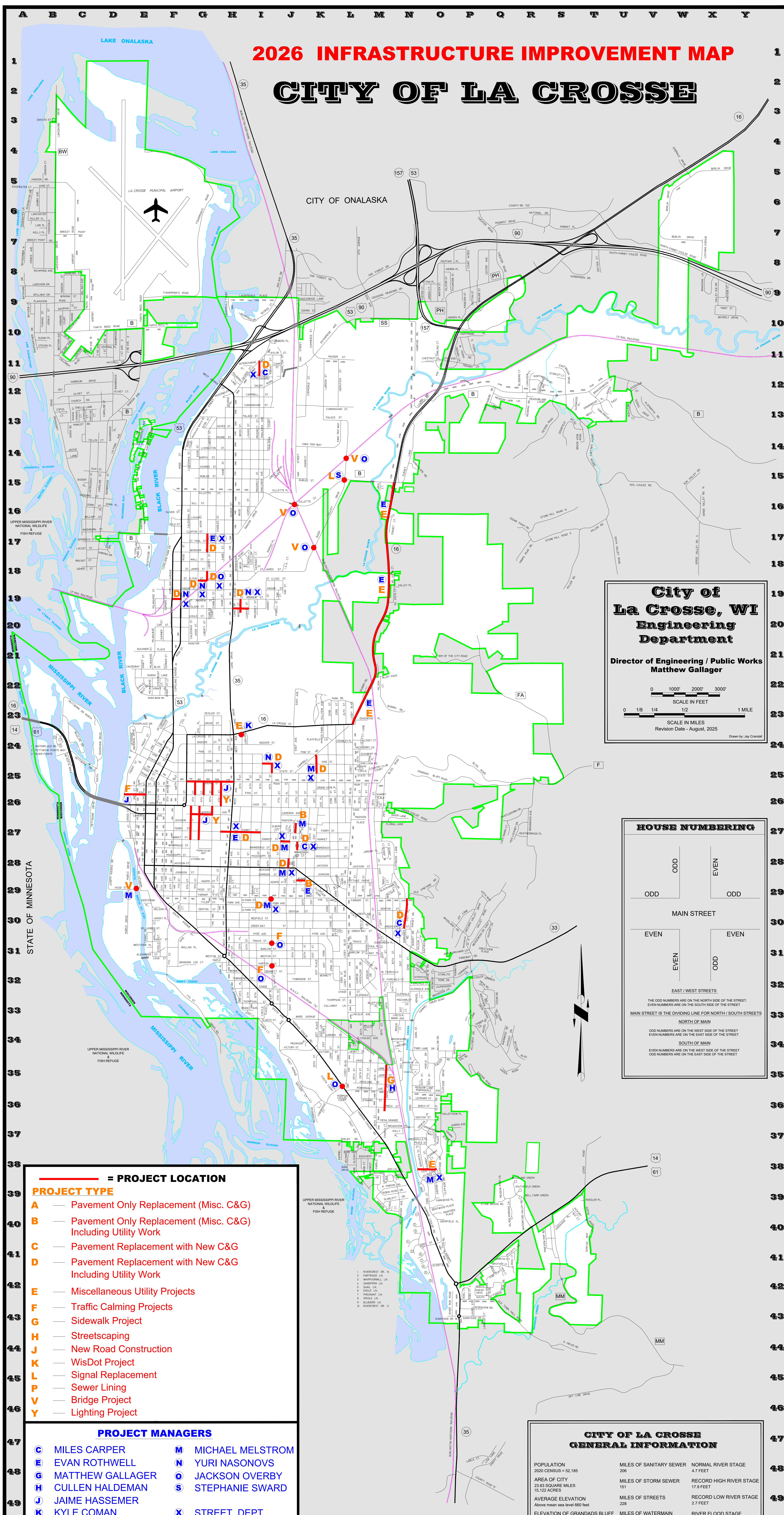


# STREET INDEX

1ST AVE. EAST C.D. 10-11  
1ST AVE. WEST C.D. 10-11  
2ND ST. EAST C.D. 10-11  
2ND ST. WEST C.D. 10-11  
3RD ST. EAST C.D. 10-11  
3RD ST. WEST C.D. 10-11  
4TH ST. EAST C.D. 10-11  
4TH ST. WEST C.D. 10-11  
5TH AVE. EAST C.D. 10-11  
5TH AVE. WEST C.D. 10-11  
6TH ST. EAST C.D. 10-11  
6TH ST. WEST C.D. 10-11  
7TH ST. EAST C.D. 10-11  
7TH ST. WEST C.D. 10-11  
8TH ST. EAST C.D. 10-11  
8TH ST. WEST C.D. 10-11  
9TH ST. EAST C.D. 10-11  
9TH ST. WEST C.D. 10-11  
10TH ST. EAST C.D. 10-11  
10TH ST. WEST C.D. 10-11  
11TH ST. EAST C.D. 10-11  
11TH ST. WEST C.D. 10-11  
12TH AVE. G. 11-12  
12TH ST. G. 11-12  
13TH CT. H. 12-13  
13TH PL. H. 12-13  
14TH ST. H. 12-13  
14TH ST. H. 23-24  
15TH ST. H. 23-24, 31-33  
15TH ST. I. 23-24  
16TH ST. H. 23-24  
17TH ST. H. 23-24  
17TH ST. J. 23-24, 31-33  
18TH ST. H. 23-24  
19TH ST. J. 23-24, 31-33  
20TH ST. J. 23-24  
21ST ST. K. 23-24, 31-33  
21ST ST. K. 34-35  
21ST TERR. K. 30-31  
22ND ST. K. 23-24, 31-33  
22ND ST. K. 34-35  
23RD ST. L. 23-24, 31-33  
23RD ST. L. 34-35  
24TH ST. L. 23-24  
25TH ST. L. 23-24, 31-33  
26TH ST. L. 23-24, 31-33  
27TH ST. L. 23-24, 31-33  
27TH ST. L. 34-35  
28TH ST. M. 23-24, 31-33  
28TH ST. M. 34-35  
29TH ST. M. 23-24, 31-33  
29TH ST. M. 34-35  
30TH ST. M. 23-24, 31-33  
30TH ST. M. 34-35  
31ST ST. N. 23-24, 31-33  
31ST ST. N. 34-35  
32ND ST. N. 23-24, 31-33  
32ND ST. N. 34-35  
33RD ST. N. 23-24, 31-33  
33RD ST. N. 34-35  
34TH ST. N. 23-24, 31-33  
34TH ST. N. 34-35  
35TH ST. N. 23-24, 31-33  
35TH ST. N. 34-35  
36TH ST. N. 23-24, 31-33  
36TH ST. N. 34-35  
37TH ST. N. 23-24, 31-33  
37TH ST. N. 34-35  
38TH ST. N. 23-24, 31-33  
38TH ST. N. 34-35  
39TH ST. N. 23-24, 31-33  
39TH ST. N. 34-35  
40TH ST. N. 23-24, 31-33  
40TH ST. N. 34-35  
41ST ST. O. 23-24, 31-33  
41ST ST. O. 34-35  
42ND ST. O. 23-24, 31-33  
42ND ST. O. 34-35  
43RD ST. O. 23-24, 31-33  
43RD ST. O. 34-35  
44TH ST. O. 23-24, 31-33  
44TH ST. O. 34-35  
45TH ST. O. 23-24, 31-33  
45TH ST. O. 34-35  
46TH ST. O. 23-24, 31-33  
46TH ST. O. 34-35  
47TH ST. P. 23-24, 31-33  
47TH ST. P. 34-35  
48TH ST. P. 23-24, 31-33  
48TH ST. P. 34-35  
49TH ST. P. 23-24, 31-33  
49TH ST. P. 34-35  
50TH ST. P. 23-24, 31-33  
50TH ST. P. 34-35  
51ST ST. Q. 23-24, 31-33  
51ST ST. Q. 34-35  
52ND ST. Q. 23-24, 31-33  
52ND ST. Q. 34-35  
53RD ST. Q. 23-24, 31-33  
53RD ST. Q. 34-35  
54TH ST. Q. 23-24, 31-33  
54TH ST. Q. 34-35  
55TH ST. Q. 23-24, 31-33  
55TH ST. Q. 34-35  
56TH ST. Q. 23-24, 31-33  
56TH ST. Q. 34-35  
57TH ST. R. 23-24, 31-33  
57TH ST. R. 34-35  
58TH ST. R. 23-24, 31-33  
58TH ST. R. 34-35  
59TH ST. R. 23-24, 31-33  
59TH ST. R. 34-35  
60TH ST. R. 23-24, 31-33  
60TH ST. R. 34-35  
61ST ST. S. 23-24, 31-33  
61ST ST. S. 34-35  
62ND ST. S. 23-24, 31-33  
62ND ST. S. 34-35  
63RD ST. S. 23-24, 31-33  
63RD ST. S. 34-35  
64TH ST. S. 23-24, 31-33  
64TH ST. S. 34-35  
65TH ST. S. 23-24, 31-33  
65TH ST. S. 34-35  
66TH ST. S. 23-24, 31-33  
66TH ST. S. 34-35  
67TH ST. T. 23-24, 31-33  
67TH ST. T. 34-35  
68TH ST. T. 23-24, 31-33  
68TH ST. T. 34-35  
69TH ST. T. 23-24, 31-33  
69TH ST. T. 34-35  
70TH ST. T. 23-24, 31-33  
70TH ST. T. 34-35  
71ST ST. U. 23-24, 31-33  
71ST ST. U. 34-35  
72ND ST. U. 23-24, 31-33  
72ND ST. U. 34-35  
73RD ST. U. 23-24, 31-33  
73RD ST. U. 34-35  
74TH ST. U. 23-24, 31-33  
74TH ST. U. 34-35  
75TH ST. U. 23-24, 31-33  
75TH ST. U. 34-35  
76TH ST. V. 23-24, 31-33  
76TH ST. V. 34-35  
77TH ST. V. 23-24, 31-33  
77TH ST. V. 34-35  
78TH ST. V. 23-24, 31-33  
78TH ST. V. 34-35  
79TH ST. V. 23-24, 31-33  
79TH ST. V. 34-35  
80TH ST. V. 23-24, 31-33  
80TH ST. V. 34-35  
81ST ST. W. 23-24, 31-33  
81ST ST. W. 34-35  
82ND ST. W. 23-24, 31-33  
82ND ST. W. 34-35  
83RD ST. W. 23-24, 31-33  
83RD ST. W. 34-35  
84TH ST. W. 23-24, 31-33  
84TH ST. W. 34-35  
85TH ST. W. 23-24, 31-33  
85TH ST. W. 34-35  
86TH ST. W. 23-24, 31-33  
86TH ST. W. 34-35  
87TH ST. X. 23-24, 31-33  
87TH ST. X. 34-35  
88TH ST. X. 23-24, 31-33  
88TH ST. X. 34-35  
89TH ST. X. 23-24, 31-33  
89TH ST. X. 34-35  
90TH ST. X. 23-24, 31-33  
90TH ST. X. 34-35  
91ST ST. Y. 23-24, 31-33  
91ST ST. Y. 34-35  
92ND ST. Y. 23-24, 31-33  
92ND ST. Y. 34-35  
93RD ST. Y. 23-24, 31-33  
93RD ST. Y. 34-35  
94TH ST. Y. 23-24, 31-33  
94TH ST. Y. 34-35  
95TH ST. Y. 23-24, 31-33  
95TH ST. Y. 34-35  
96TH ST. Y. 23-24, 31-33  
96TH ST. Y. 34-35  
97TH ST. Y. 23-24, 31-33  
97TH ST. Y. 34-35  
98TH ST. Y. 23-24, 31-33  
98TH ST. Y. 34-35  
99TH ST. Y. 23-24, 31-33  
99TH ST. Y. 34-35  
100TH ST. Y. 23-24, 31-33  
100TH ST. Y. 34-35



# 2026 INFRASTRUCTURE IMPROVEMENT MAP CITY OF LA CROSSE

**City of La Crosse, WI  
Engineering Department**

Director of Engineering / Public Works  
**Matthew Gallager**

0 1000' 2000' 3000'  
SCALE IN FEET

0 1/8 1/4 1/2 1  
SCALE IN MILES

Revision Date: August, 2025  
Drawn by: Jay Conrad

**HOUSE NUMBERING**

ODD | EVEN

ODD | ODD

MAIN STREET

EVEN | EVEN

EVEN | ODD

EAST / WEST STREETS

THE ODD NUMBERS ARE ON THE NORTH SIDE OF THE STREET.  
EVEN NUMBERS ARE ON THE SOUTH SIDE OF THE STREET.

MAIN STREET IS THE DIVIDING LINE FOR NORTH / SOUTH STREETS

NORTH OF MAIN

ODD NUMBERS ARE ON THE WEST SIDE OF THE STREET  
EVEN NUMBERS ARE ON THE EAST SIDE OF THE STREET

SOUTH OF MAIN

EVEN NUMBERS ARE ON THE WEST SIDE OF THE STREET  
ODD NUMBERS ARE ON THE EAST SIDE OF THE STREET

**PROJECT TYPE**

**A** — Pavement Only Replacement (Misc. C&G)

**B** — Pavement Only Replacement (Misc. C&G) Including Utility Work

**C** — Pavement Replacement with New C&G

**D** — Pavement Replacement with New C&G Including Utility Work

**E** — Miscellaneous Utility Projects

**F** — Traffic Calming Projects

**G** — Sidewalk Project

**H** — Streetscaping

**J** — New Road Construction

**K** — WisDot Project

**L** — Signal Replacement

**P** — Sewer Lining

**V** — Bridge Project

**Y** — Lighting Project

**PROJECT MANAGERS**

<b>C</b> MILES CARPER	<b>M</b> MICHAEL MELSTROM
<b>E</b> EVAN ROTHWELL	<b>N</b> YURI NASONOV
<b>G</b> MATTHEW GALLAGER	<b>O</b> JACKSON OVERBY
<b>H</b> CULLEN HALDEMAN	<b>S</b> STEPHANIE SWARD
<b>J</b> JAIME HASSEMER	
<b>K</b> KYLE COMAN	<b>X</b> STREET DEPT.

**CITY OF LA CROSSE  
GENERAL INFORMATION**

POPULATION 2020 CENSUS = 52,185	MILES OF SANITARY SEWER 206	NORMAL RIVER STAGE 4.7 FEET
AREA OF CITY 23.63 SQUARE MILES 15,122 ACRES	MILES OF STORM SEWER 151	RECORD HIGH RIVER STAGE 17.6 FEET
AVERAGE ELEVATION Above mean sea level: 1215 feet	MILES OF STREETS 628	RECORD LOW RIVER STAGE 2.7 FEET
	MILES OF WATERMAIN 229	RIVER FLOOD STAGE 12.0 FEET