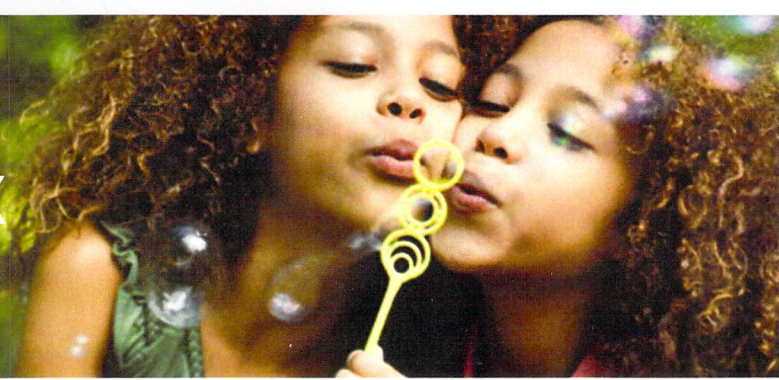
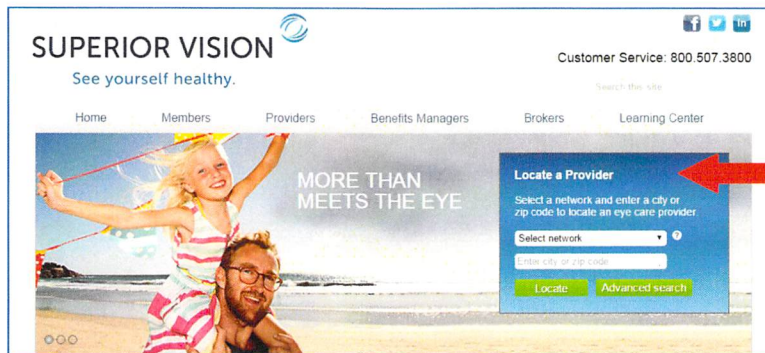


Superior Select Midwest FINDING IN-NETWORK PROVIDERS



3 Easy Steps to Finding an In-Network Superior Select Midwest Provider

STEP 1: Go to **SuperiorVision.com**. In the “**Locate a Provider**” box, select your provider network, enter your city or ZIP code and click the “**Locate**” button. You can also click the “**Advanced Search**” button to search by mile radius, eye care provider’s name or practice name.



Locate a Provider

You may also **login** to the member area of the website, select “**Locate a Provider**” from the navigation and your network will be auto-populated on the page.

Looking for your provider network?

We've made it easy! Select your network from the table or [login](#) to link automatically to your commercial vision plan's network.

| | |
|--|---|
| Superior Vision Services, Inc. Is Now | > Superior National |
| Block Vision, Inc. Is Now | > Superior Select |
| Vision Insurance Plan of America, Inc. Is Now (VIPA) | > Superior Select Midwest |
| Block Vision of Texas, Inc. Is Now | > Superior Select Southwest |

Your Network Is:
**Superior Select
Midwest**



STEP 2: Review the list of results from your search and choose an eye care provider.

- **Call your selected eye care provider prior to your appointment to verify provider network participation and to confirm services and acceptance of your vision plan.**
- It's important to note that not all providers at each office or optical store location are in-network providers, nor do they participate in all networks.

STEP 3: You may also call Customer Service at 800.507.3800 for assistance in locating an in-network provider.